

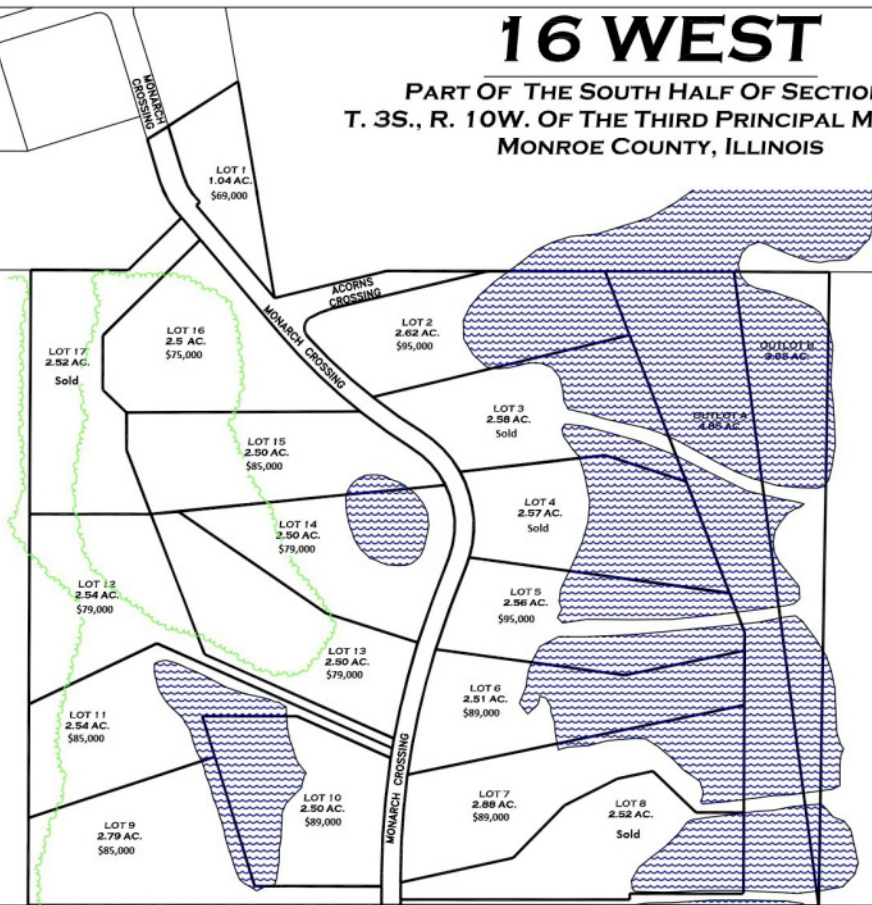
16 WEST

PART OF THE SOUTH HALF OF SECTION 4,
T. 3S., R. 10W. OF THE THIRD PRINCIPAL MERIDIAN,
MONROE COUNTY, ILLINOIS



(ASSUMED)

SCALE: 1" = 250'



- Stunning golf course views
- Golf cart access to Acorns Golf Links
- Large lots maintain privacy from neighbors and golfers
- Wooded lots, lake lots, and private lots
- Covenants insures upscale homes while maintaining reasonable house size requirements

More info Call Ryan
@ 618-447-5252

*Fountain Water, Monroe County Electric, Ameron Gas, and individual septic systems. 16 West is located in Waterloo School District. The Monarch Crossing will be maintained by Monroe County. Property is in Waterloo School District.